

# ARRL Handbook CD

## Template File

**Title:** NB Match

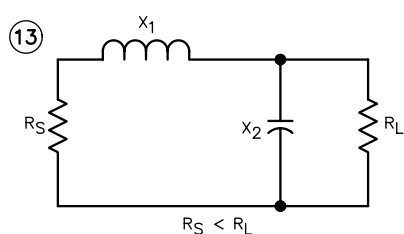
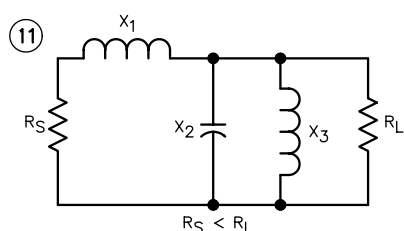
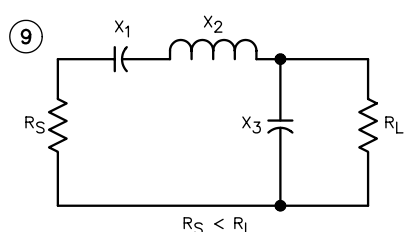
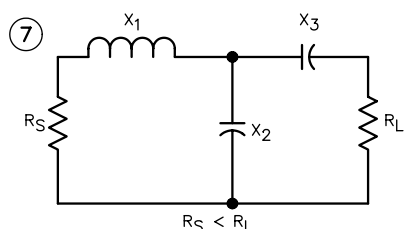
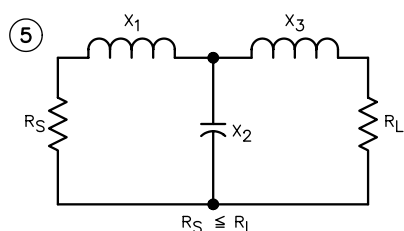
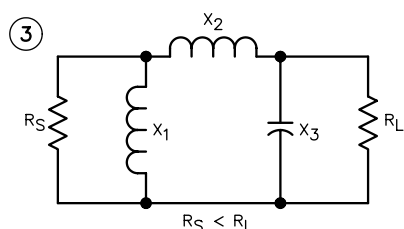
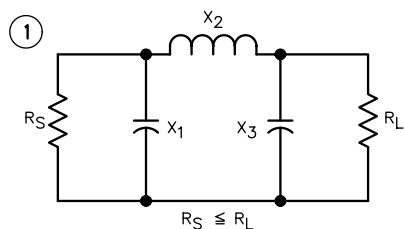
**Chapter:** 17

**Topic:** NBMATCH.BAS Diagrams

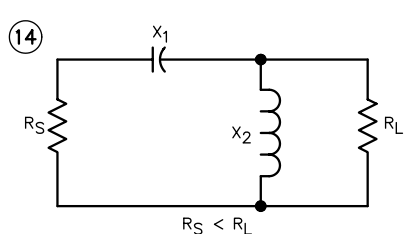
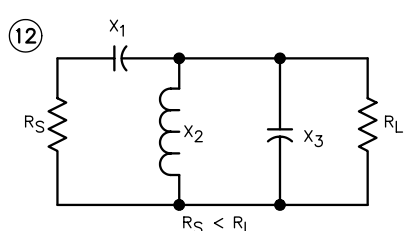
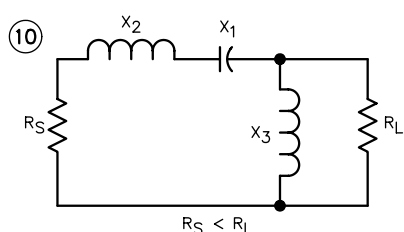
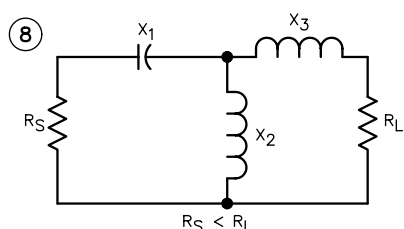
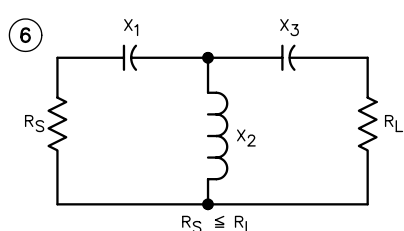
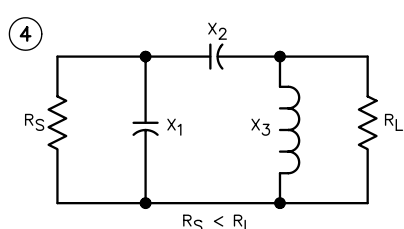
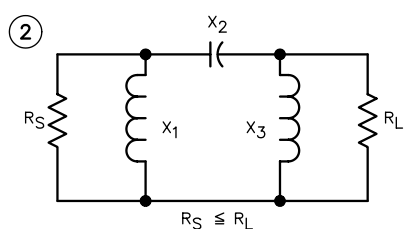
Template contains:

Diagram showing 14 possible network configurations to be analyzed by NBMATCH.BAS computer program.

### Low-Pass Networks



### High-Pass Networks



This page accompanies the **ARRL Handbook** software package that is available at <http://www.arrl.org/notes/>. This figure shows the 14 possible network configurations used by NBMATCH.BAS. Refer to this figure and enter the desired network by number when you run the program. Note that low-pass networks have an odd identifying number while high-pass networks have an even identifying number. See the Network Equations section of Chapter 17.