

ARRL Handbook CD

Template File

Title: 2 Meter Brick Amplifier

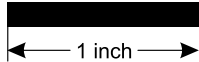
Chapter: 18

Topic: A 2-M Brick Amp for Handhelds

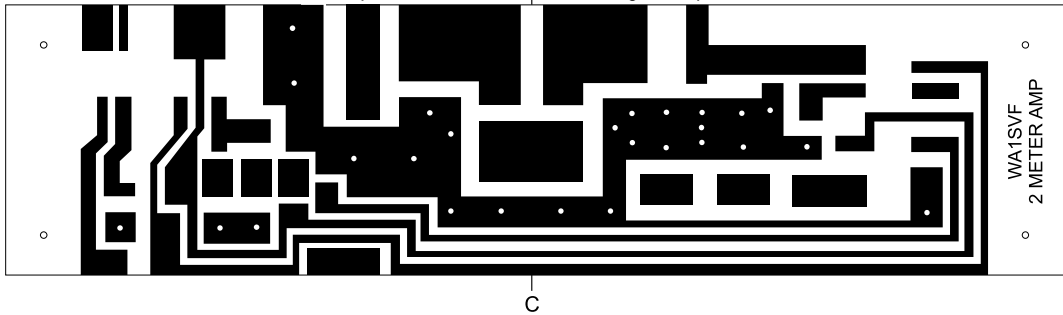
Template contains:

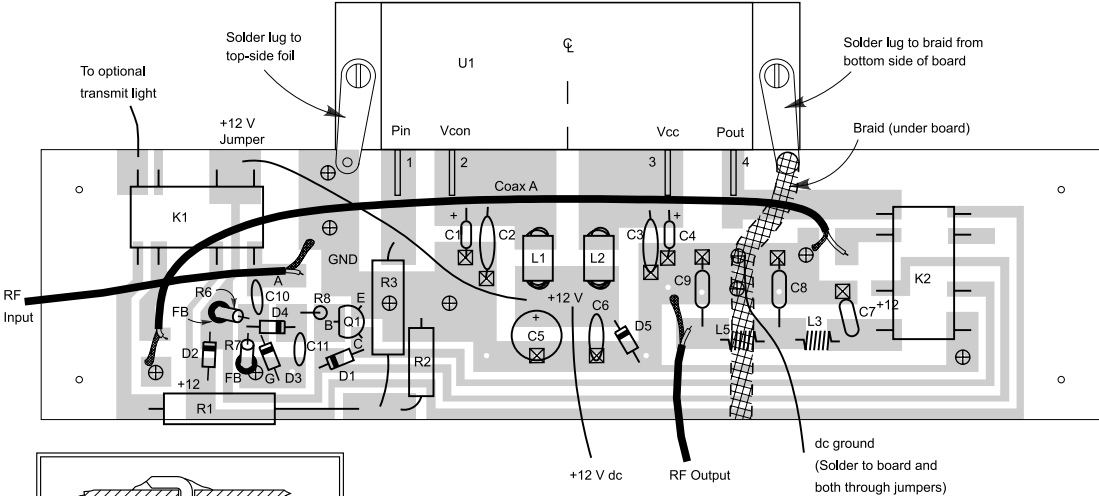
PC board etching pattern.

Parts placement diagram.



1 2 C 3 4





Insert short wire through hole.
Bend ends over and solder to
both board faces.

⊗ = Component through hole
(solder both sides)

⊕ = Jumper through hole (see inset)