

# ARRL Handbook CD

## Template File

**Title:** Kossor Amp

**Chapter:** 14

**Topic:** A Broadband HF Amplifier

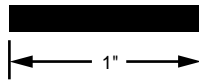
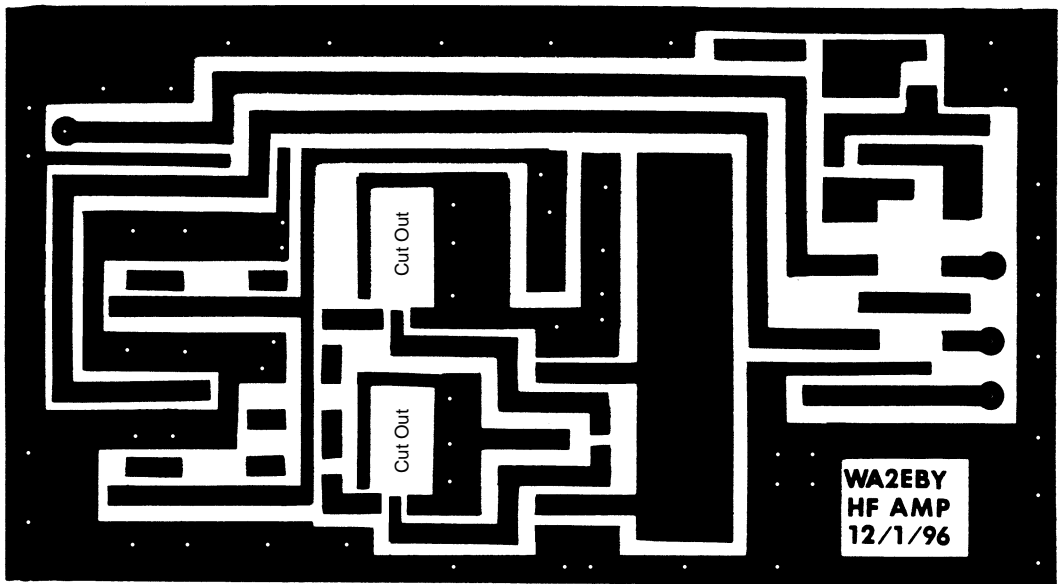
Template contains:

[Amplifier board etching pattern and parts placement diagram.](#)

This is a double-sided circuit board with the second side being a solid ground plane. All components mount to the top of the board, as shown in the parts-placement diagram. Components with wire leads are mounted by bending their leads and soldering directly to the circuit traces. Rectangular cutouts allow Q1 and Q2 to lie flat on the board. Holes are for the insertion of wire jumpers. Solder to both the top trace and the bottom ground foil.

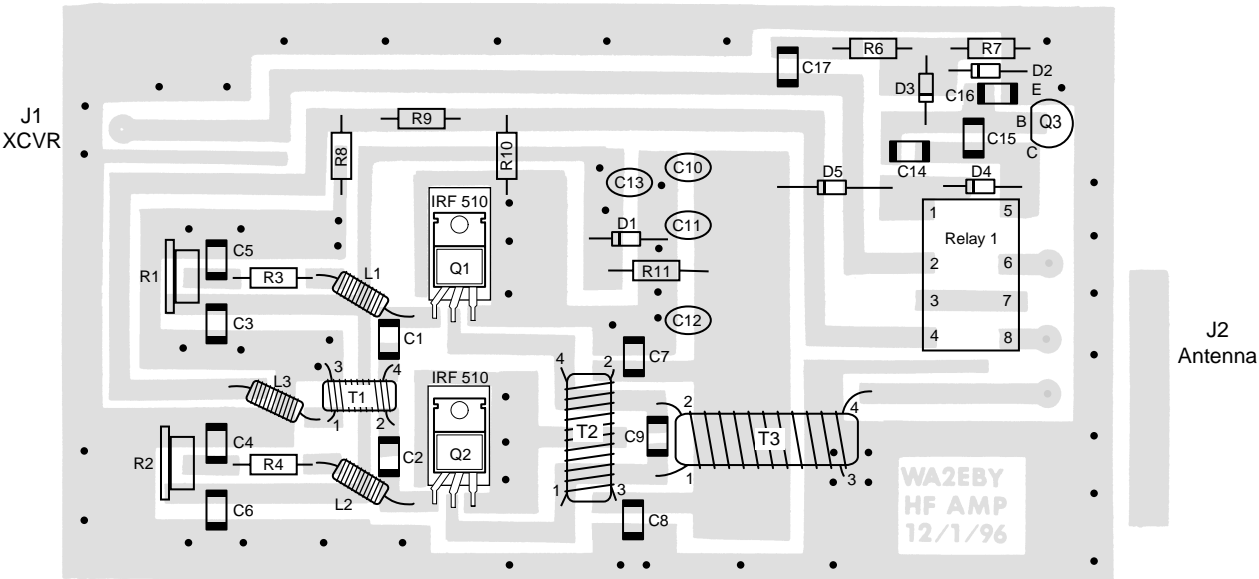
[Filter board etching pattern and parts placement diagram.](#)

This is a double-sided circuit board with the second side being a solid ground plane. All components mount to the top of the board, as shown in the parts-placement diagram. Use a 1/4 inch drill bit to remove the copper around each switch pin (but don't drill all the way through the circuit board with that bit!). The other holes are for the insertion of wire jumpers, soldered to both the top trace and the bottom ground foil.

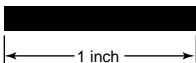
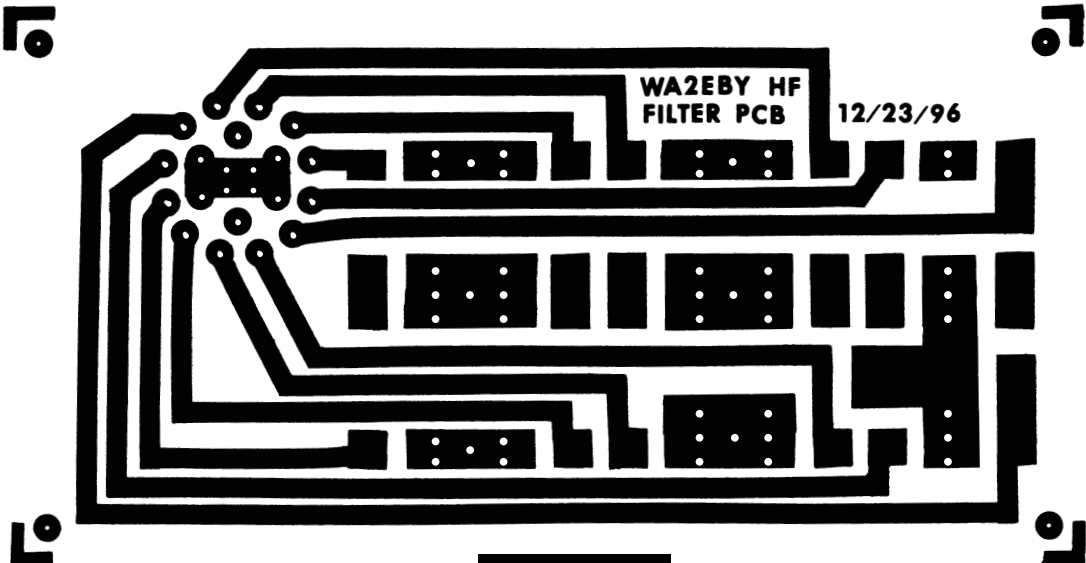


Amplifier Board Etching Pattern

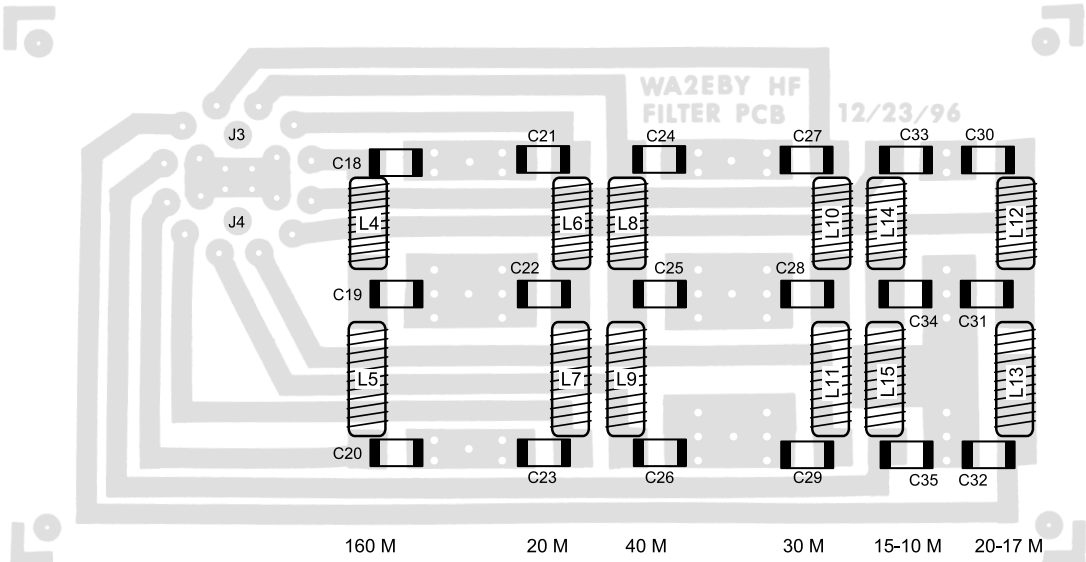
• = Ground via hole



Amplifier Board Parts-Placement Diagram



Filter Board Etching Pattern



Filter Board Parts-Placement Diagram