

# ARRL Handbook CD

## Template File

**Title:** NB Match

**Chapter:** 17

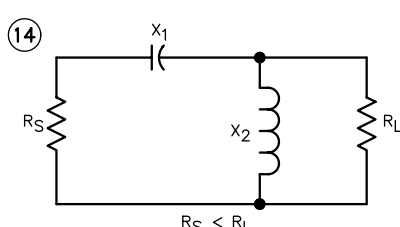
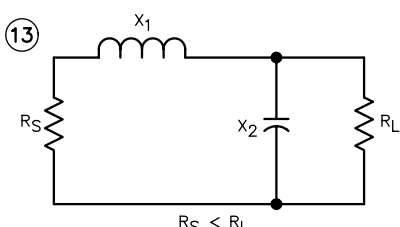
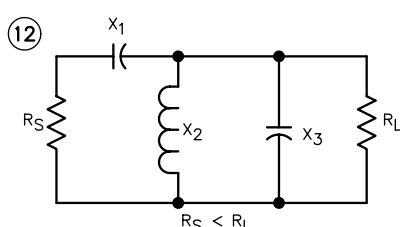
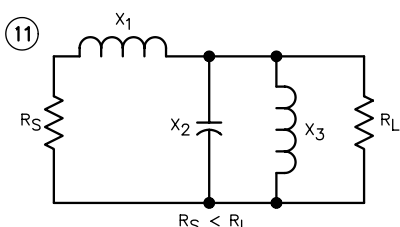
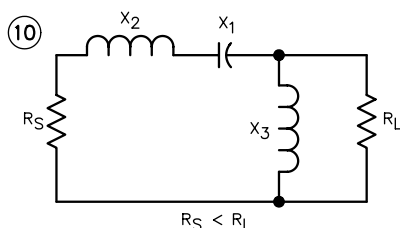
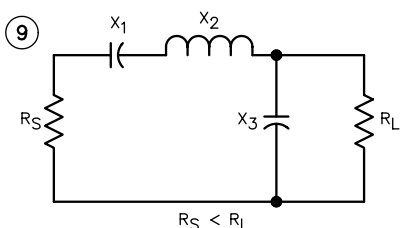
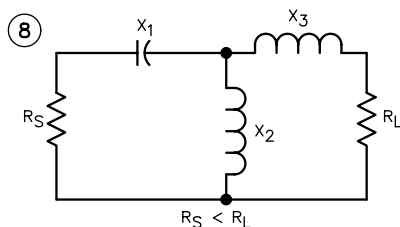
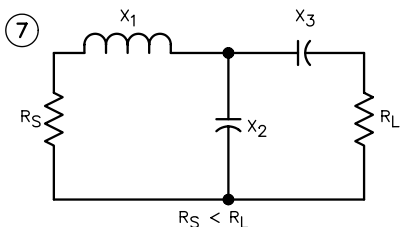
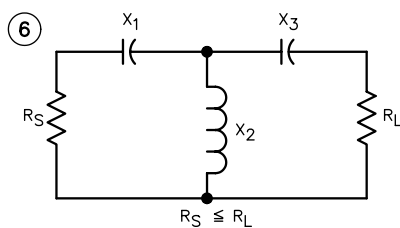
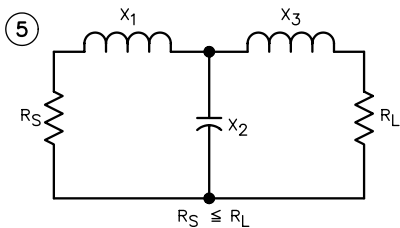
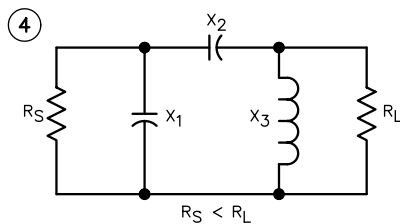
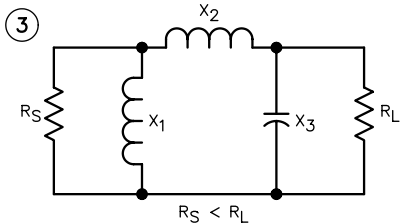
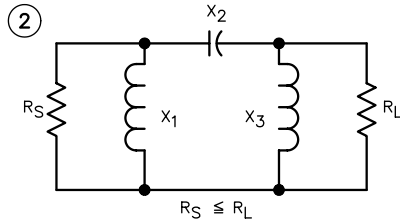
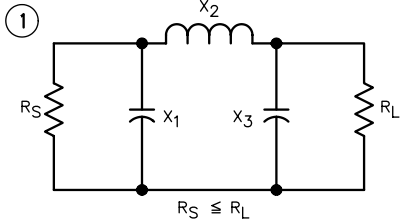
**Topic:** MATCH.EXE Diagrams

Template contains:

Diagram showing 14 possible network configurations to be analyzed by MATCH.EXE computer program.

Low-Pass Networks

High-Pass Networks



This page accompanies the *ARRL Handbook* software package that is available on the *Handbook CD*. This figure shows the 14 possible network configurations used by MATCH.EXE. Refer to this figure and enter the desired network by number when you run the program. Note that low-pass networks have an odd identifying number while high-pass networks have an even identifying number. See the *Broadband Transformers* file on the *Handbook CD-ROM*.