

# L'HISTOIRE de l'ÉMISSION, RÉCEPTION, EXPÉRIMENTATION RADIOAMATEUR en 1932 aux U.S.A.\*

Article N°7

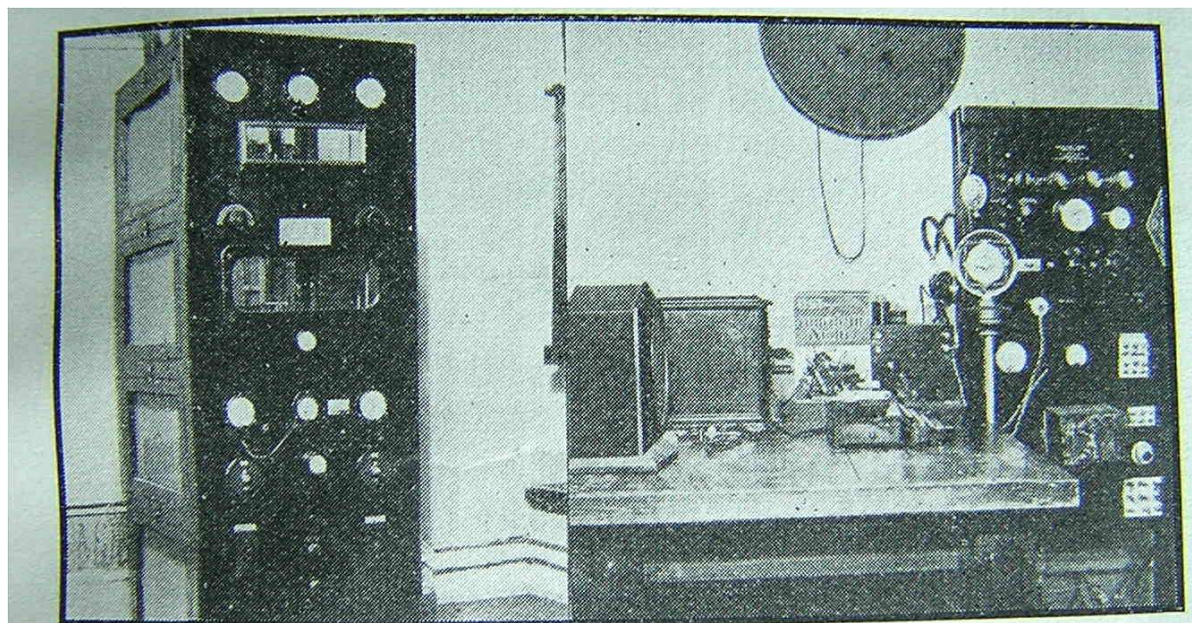


Photographies

## STATIONS OM U.S.A 1932

Adaptation technique et composition F6BCU

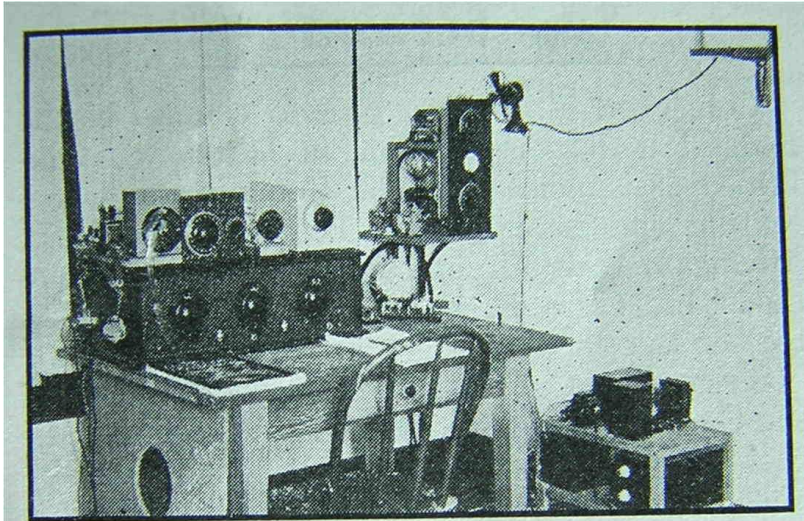
### STATION W5AWP



W5AWP — A WELL LAID-OUT STATION, OPERATING CHIEFLY ON 'PHONE

*The transmitter, at the left, is completely screened, with doors on the side to permit the operator to get at the apparatus on the different shelves. Control switches and speech amplifier are mounted on the rack at the right of the operating table.*





**COMPACT STATION ARRANGEMENT AT W7JF**

*The transmitter is crystal-controlled, ending up with an 860. The power supply is built into a frame at the right of the operating table.*

## STATION W9DXC



*Amateur Radio Phone Station W9DCX  
Frank J. Brittin, W9DCX, 1409 Rose-*

Série d'articles techniques **QST**  
F6BCU Bernard MOUROT—RC de la Ligne bleue F8KHM  
REMOMEIX –VOSGES--27 juillet 2006